

NOZZLE

LANCIA PER LA PROIEZIONE DEL CALCESTRUZZO

SHOT-CRETE NOZZLE

LANCIA SHOT-CRETE

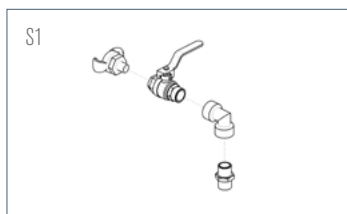
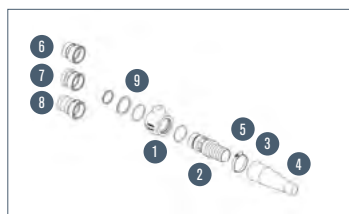
Nozzles for shot-crete applications GN 3815

Lancia per la proiezione del calcestruzzo per attrezzature shot-creting

DESCRIPTION | DESCRIZIONE

Light weight shot-crete nozzle, tip design allows for better patterns. Available with Heavy Duty, Grooved, threaded or Cam Arm collar.

Lancia di lavaggio leggera. Disponibile con collare Heavy Duty, Grooved, filettato o Cam Arm.



IT	DESCRIPTION	GN 3815-1.1/2"			
		MODEL - Tipo	PART NUMBER Codice	kg	lbs
SHOT-CRETE NOZZLE					
	Grooved end - Soft rubber tip	GN 3815 SC-S	S3010219	1.660	3.660
	Heavy duty - Soft rubber tip	GN 3815 HD-S	S3010145	1.710	3.770
	Cam-arm end - Soft rubber tip	GN 3815 CL-S	S3010192	1.660	1.660
1	Body		S3010139	0.260	0.573
2	Fitting		S3010189	0.670	1.477
3	Rubber tip - soft		K3005495	0.150	0.330
4	Rubber tip - hard		K3000407	0.170	0.375
5	Tip clamp		S3010265	0.027	0.059
6	Grooved end		S3011318	0.300	0.661
7	Raised end		S3005456	0.340	0.749
8	Cam-arm end		S3011317	0.460	1.014
9	Sealing set		S3005503	0.008	0.018
	S1 - Fitting set		S3005485	0.499	1.100
	S2 - Fitting set		S3010140	1.033	2.277